

Allemande

from English Suite No. 3

Guitar Trio

J. S. Bach
Arranged Bill Tyers

Guitar 1

Guitar 2

Guitar 3

4

Gtr. 1

Gtr. 2

Gtr. 3

6

Gtr. 1

Gtr. 2

Gtr. 3

8

Gtr. 1

Gtr. 2

Gtr. 3

10

Gtr. 1

Gtr. 2

Gtr. 3

12

Gtr. 1

Gtr. 2

Gtr. 3

15

Gtr. 1

Gtr. 2

Gtr. 3

This system contains three guitar staves. Staff 1 (Gtr. 1) begins with a treble clef and a key signature of one sharp (F#). It features a complex melodic line with many sixteenth and thirty-second notes, including triplets and slurs. Staff 2 (Gtr. 2) starts with a whole rest, followed by a few notes in the second measure, including a triplet. Staff 3 (Gtr. 3) begins with a half note, followed by a quarter note, and then a triplet of eighth notes.

17

Gtr. 1

Gtr. 2

Gtr. 3

This system contains three guitar staves. Staff 1 (Gtr. 1) continues the melodic line from the previous system. Staff 2 (Gtr. 2) has a quarter note followed by a triplet of eighth notes, then a whole rest. Staff 3 (Gtr. 3) has a quarter note followed by a triplet of eighth notes, then a quarter note.

19

Gtr. 1

Gtr. 2

Gtr. 3

This system contains three guitar staves. Staff 1 (Gtr. 1) features a melodic line with a slur over the first two measures and a key signature change to two sharps (F# and C#) in the third measure. Staff 2 (Gtr. 2) has a whole rest followed by a quarter note with a sharp sign. Staff 3 (Gtr. 3) continues with a melodic line, including a triplet of eighth notes and a slur.

21

Gtr. 1

Gtr. 2

Gtr. 3

This system contains measures 21 and 22. Gtr. 1 starts with a melodic line of eighth notes, followed by a dotted quarter note and a half note. Gtr. 2 has a whole rest in measure 21 and a melodic line in measure 22. Gtr. 3 plays a continuous eighth-note accompaniment throughout both measures.

23

Gtr. 1

Gtr. 2

Gtr. 3

This system contains measures 23 and 24. Gtr. 1 has a melodic line with a key signature change to one sharp. Gtr. 2 has a melodic line with a key signature change to one sharp and a whole rest in measure 24. Gtr. 3 continues with an eighth-note accompaniment, including a key signature change to one sharp in measure 24.

25

Gtr. 1

Gtr. 2

Gtr. 3

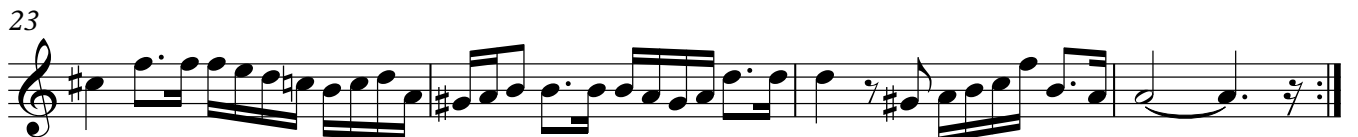
This system contains measures 25 and 26. Gtr. 1 has a melodic line with a key signature change to one sharp and a whole rest in measure 26. Gtr. 2 has a melodic line with a key signature change to one sharp and a whole rest in measure 26. Gtr. 3 continues with an eighth-note accompaniment, including a key signature change to one sharp in measure 26.

Allemande

from English Suite No. 3

Guitar 1

J. S. Bach
Arranged Bill Tyers



Allemande

Guitar 3

from English Suite No. 3

J. S. Bach
Arranged Bill Tyers

